

Police Boxes (Koban)

If you lose something, get lost, or are a victim of crime, go to the nearest Police Box (Koban).

They can handle all kinds of trouble. Feel safe to rely on them!



Avoiding trouble will make your trip so much better! Have a nice and safe trip!



YouTube

Tips for protecting yourself from crime or other trouble

<https://youtu.be/KBussXWa8IU>

Crime Prevention Manual for Visitors to Japan

Tips for protecting yourself from crime or other trouble

Metropolitan Police Department

Dialing 110

If a crime or accident happens, don't hesitate to call 110.

If you need the police in an emergency, the number is 110. Remember the number!

110 is your safety number!

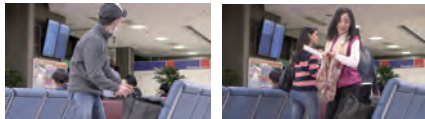


The Japanese police are there to protect you!

Prevent crime from happening to you.

Luggage theft

- ❖ Keep your belongings close to you!
- ❖ Don't take your eyes off your bags.
- ❖ Don't leave your bag open.



Pickpocketing

- ❖ Don't leave your bag open.
- ❖ Bags which you can zip up are best!
- ❖ It's also a good idea to carry your bag in front of you.



Street hawking and rip-offs

- ❖ Street hawking is prohibited.
- ❖ Don't listen to what street hawkers say!



Laws to obey

Requirement to carry and present your passport

- ❖ It is compulsory for you to carry your passport and any other permits during your stay.
- ❖ Always have your passport with you!



Controlled substances

- ❖ Never buy any illegal drugs!
Never bring them into Japan!
- ❖ Cannabis is an illegal substance in Japan.
- ❖ You will be arrested for possession of cannabis, no matter how small the amount!



※ Photos provided by the Ministry of Health, Labor and Welfare

Valid driver's licenses in Japan

- ❖ To drive as a tourist in Japan, you will need an International Driving Permit.
- ❖ Contact your embassy for details.



Flying drones

- ❖ You are not allowed to fly drones in most areas of Tokyo.
- ❖ You may not fly drones unless you obtain relevant permission or approval.



Counterfeit goods

- ❖ Goods that use emblems, mascots or other copyrighted material without the rightholder's permission are considered as counterfeit.
- ❖ Do not bring in, create, or sell counterfeit goods!



Avoiding trouble

Trouble involving alcohol

- ❖ Hugging and kissing are not customary in Japan.
- ❖ Just settle for a handshake or high-five.
- ❖ Make sure not to be too loud.



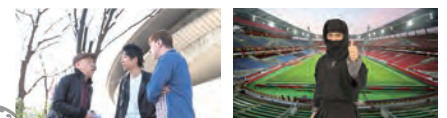
Trouble involving cutting in line

- ❖ There may only be one line leading to several cash registers - Be careful not to accidentally cut in line.
- ❖ Make sure your bags are not blocking the way!



Trouble with ticket scalpers

- ❖ Scalpers try to sell you tickets at several times the original price. Never buy from them!
- ❖ It is also prohibited to sell tickets to scalpers.
- ❖ Go to official websites and ticket offices to buy your tickets.



Ninpo!
忍法!
Tips for protecting yourself from crime or other trouble!